



GTF II™ Stem

Femoral Hip System

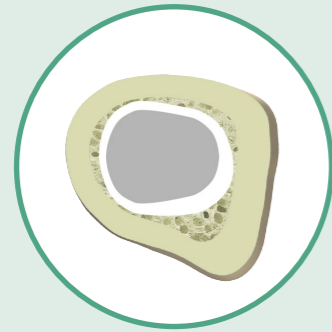


GTF II Stem –

The GTF II stem is a cemented stem indicated for patients with femoral head, neck and intertrochanteric fractures, and severe proximal bone loss. Its adoption of a cement friendly trapezoidal cross-sectional geometric design facilitates the reduction of bone-cement interface stresses to help avoid cement failure.

The GTF II stem allows for two resection levels, and offers two options of stem diameter and stem length to account for differing bone conditions.





Cutouts and Open Through-hole

- Designed for additional wire fixation options

Trapezoidal Cross-section

- Designed to reduce stress on the cement mantle

Distal Centralizer

- Equalizes cement mantle and ensures correct stem alignment

Tapered Distal Tip

- Designed to avoid cement failure

Cement Restrictor

- Prevent cement leakage

12/14 Neck Taper

- Accommodate a complete selection of femoral heads



45 mm Resection Level



55 mm Resection Level

Multiple Sizing Options

- 2 stem lengths (130 mm and 160 mm)
- 2 stem diameters (Ø9 mm and Ø11 mm)
- 2 resection levels (45 mm and 55 mm)

Total 2 x 2 x 2 = 8 sizes

Order Information

Catalog Number	Description
----------------	-------------

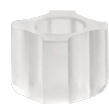
GTF II Stem



	Distal Diameter	Resection Level	Medial Length
1108 - 3041	Ø 9 mm	45 mm	130 mm
1108 - 3043	Ø 9 mm	45 mm	160 mm
1108 - 3051	Ø 9 mm	55 mm	130 mm
1108 - 3053	Ø 9 mm	55 mm	160 mm
1108 - 5041	Ø 11 mm	45 mm	130 mm
1108 - 5043	Ø 11 mm	45 mm	160 mm
1108 - 5051	Ø 11 mm	55 mm	130 mm
1108 - 5053	Ø 11 mm	55 mm	160 mm

Catalog Number	Description
----------------	-------------

Centralizer

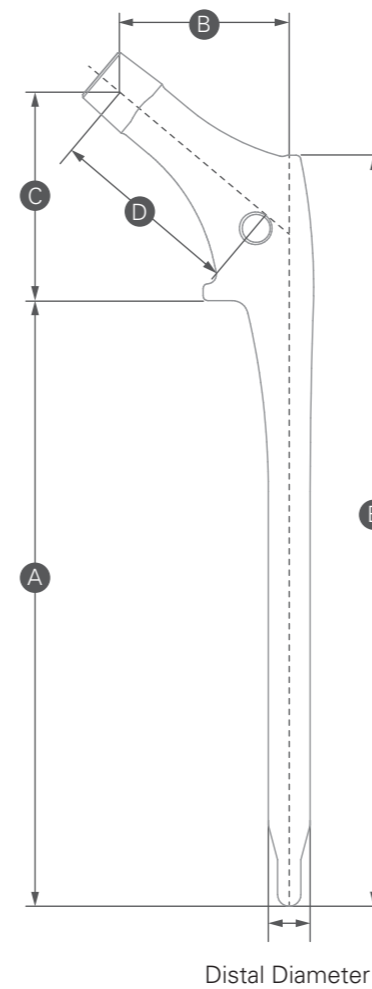


1904 - 5010	Ø 10 mm
1904 - 5011	Ø 11 mm
1904 - 5012	Ø 12 mm
1904 - 5013	Ø 13 mm
1904 - 5014	Ø 14 mm

Cement Restrictor



	ØA	ØB
1905 - 7007	7 mm	13 mm
1905 - 7008	8 mm	14 mm
1905 - 7009	9 mm	15 mm
1905 - 7010	10 mm	16 mm
1905 - 7011	11 mm	17 mm
1905 - 7012	12 mm	18 mm
1905 - 7013	13 mm	19 mm
1905 - 7014	14 mm	20 mm
1905 - 7015	15 mm	21 mm
1905 - 7016	16 mm	22 mm



Distal Diameter	A Medial Length	B Offset	C Vertical Height	D Neck Length	E Lateral Length
Ø 9	130	36	45	47	161
Ø 9	160	36	45	47	191
Ø 9	130	36	55	47	161
Ø 9	160	36	55	47	191
Ø 11	130	39	45	51	161
Ø 11	160	39	45	51	191
Ø 11	130	39	55	51	161
Ø 11	160	39	55	51	191

Unit: mm

Please note that all United Orthopedic Corporation product brochures have been authored in the English language. Any translations into other languages have not been reviewed or approved by United Orthopedic Corporation and their accuracy cannot be confirmed. Any questions regarding United Orthopedic Corporation products should be directed to United Orthopedic Corporation at unitedorthopedic.com/contact.

The CE mark is valid only if it is also printed on the product label.

